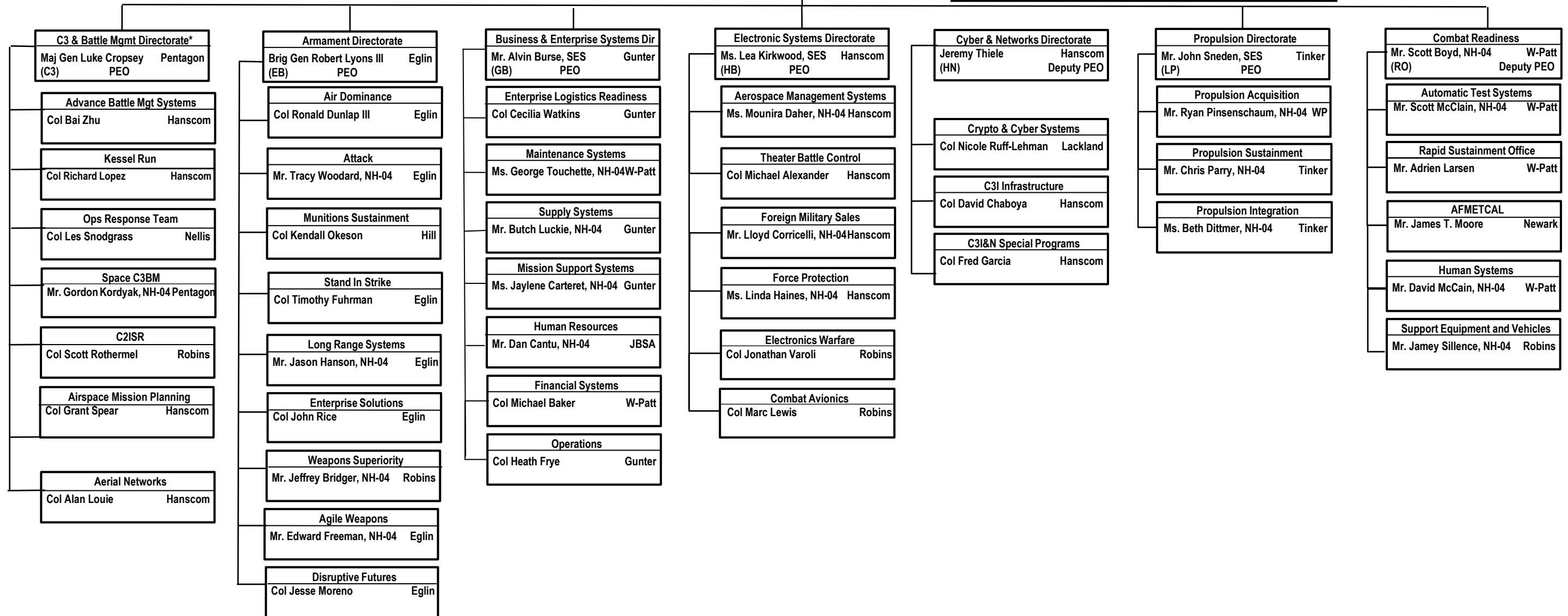
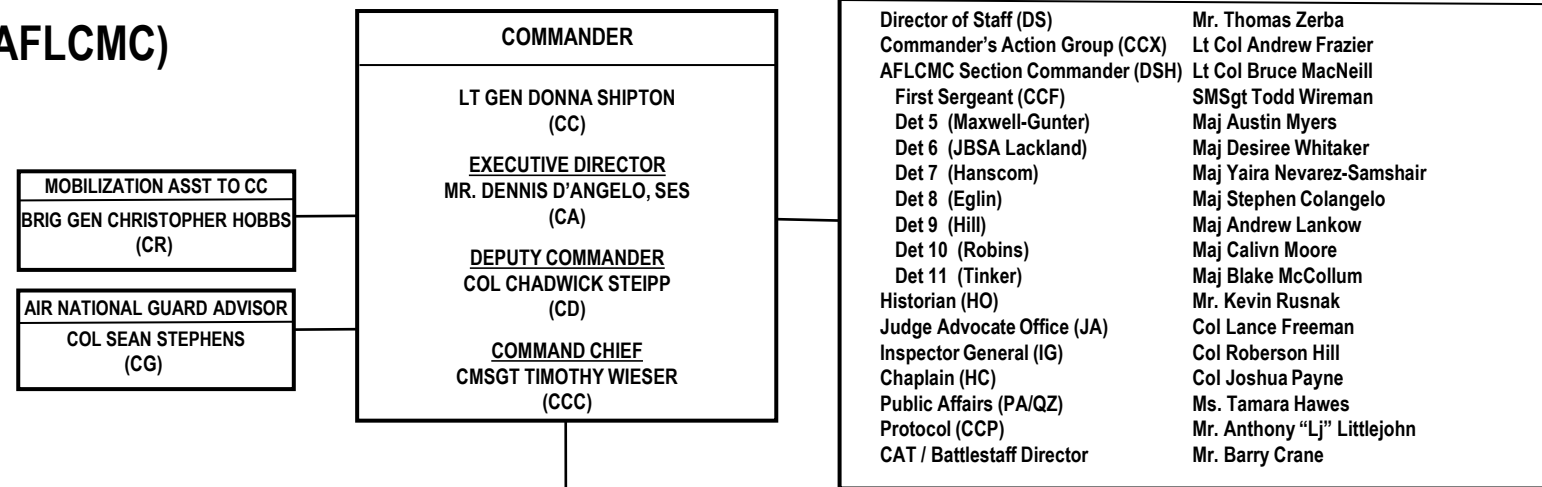


**July 2025**



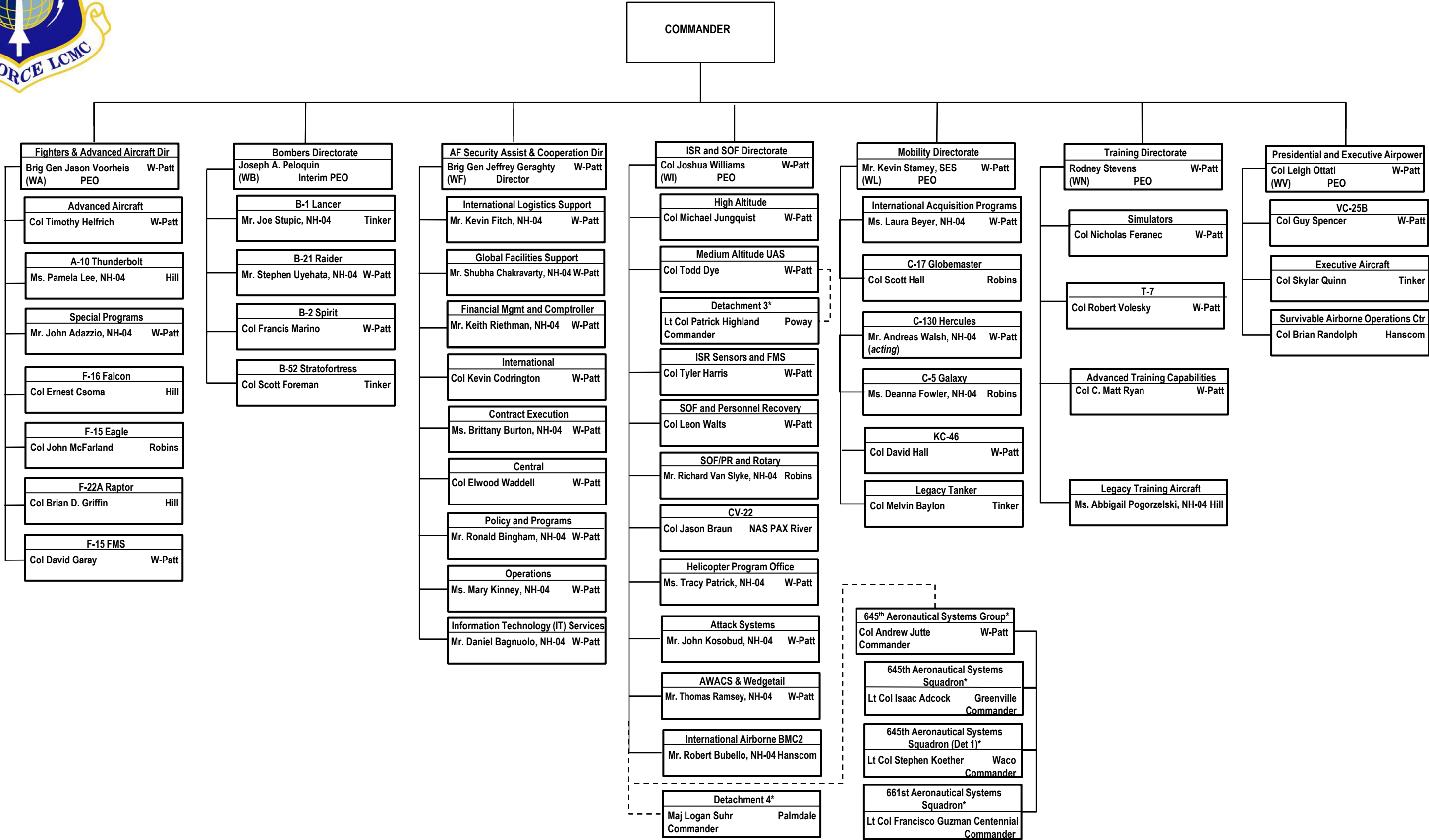
**Data current a/o 15 July 25**

\*AFLCMC/C3 supports AF C3BM with approved rating chain deviation to the PEO; AFLCMC/C3 does not include all AF C3BM positions.

**Note: All Center detachments are officially under the AFLCMC Commander and have approved Senior Rater deviations.**

AIR FORCE LIFE CYCLE MANAGEMENT CENTER (AFLCMC)  
ORGANIZATIONAL CHART

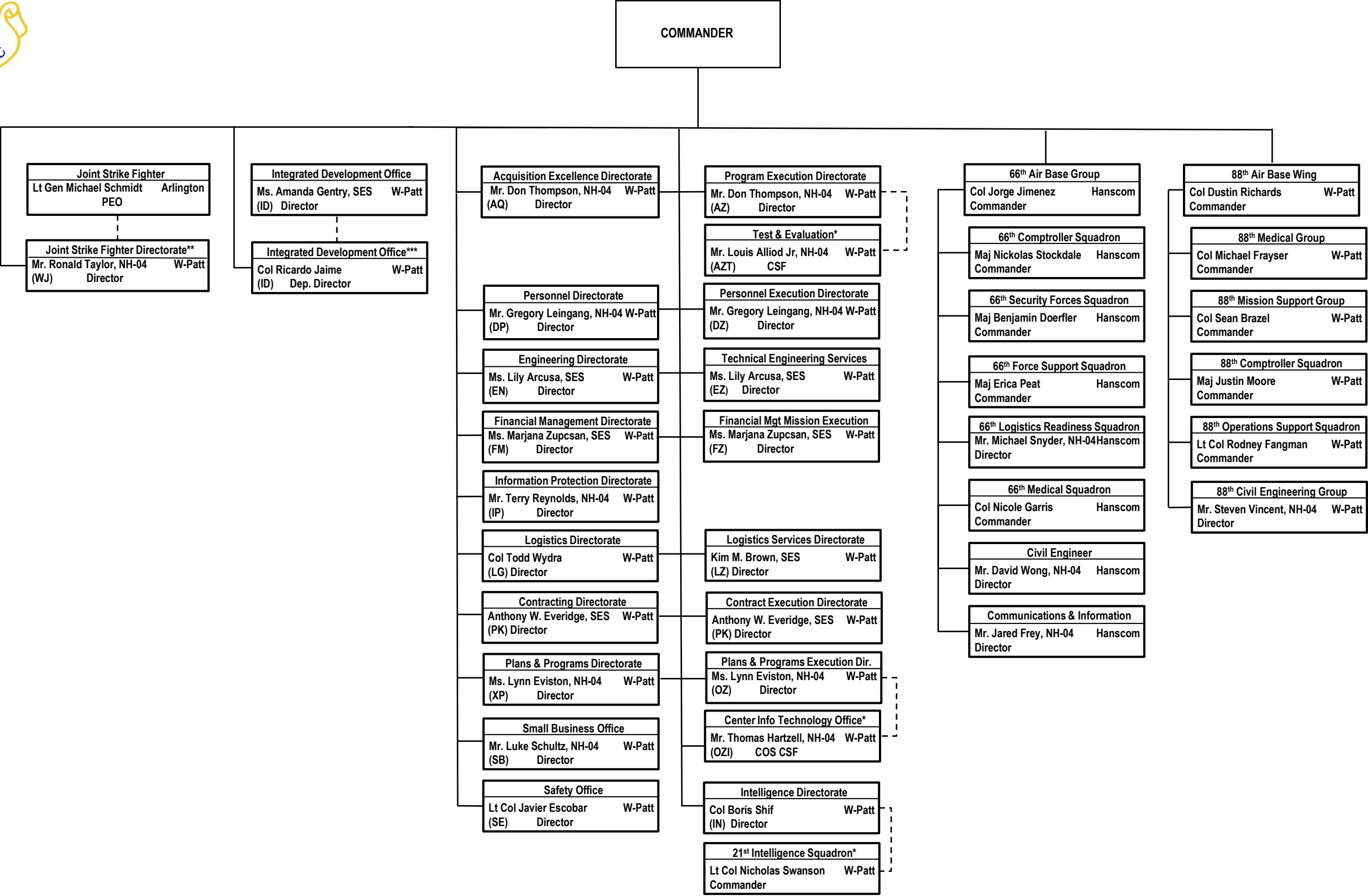
July 2025  
Page 2





AIR FORCE LIFE CYCLE MANAGEMENT CENTER (AFLCMC)  
ORGANIZATIONAL CHART

July 2025  
Page 3



Data current a/o 15 July 25

\*Organizations indirectly report through dotted line (ex. 21 IS reports to IN)–21 IS officially under AFLCMC/CC.

\*\*AFLCMC/WJ has an approved rating chain deviation and OPCON to the Joint F-35 PEO; AFLCMC/WJ does not include all Joint Program Office positions.

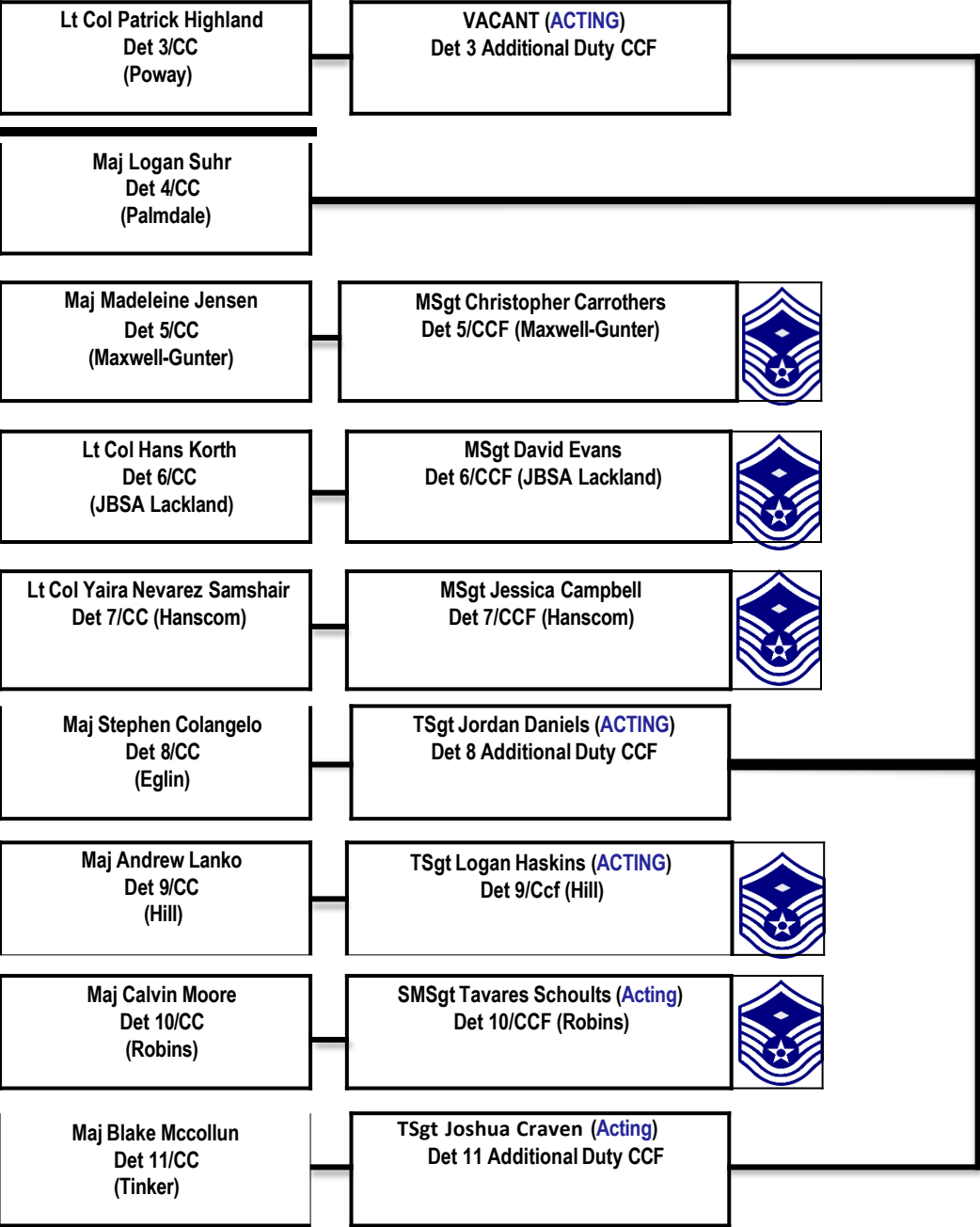
\*\*\*AFLCMC/ID has OPCON to AFMC/ID and the ID Director.

AIR FORCE LIFE CYCLE MANAGEMENT CENTER (AFLCMC)  
G-SERIES COMMANDERS & FIRST SERGEANTS

July 2025  
Page 4



Lt Gen Donna Shipton  
AFLCMC//CC  
(Wright-Patterson)



SMSgt Todd “Jake” Wireman  
AFLCMC/CCF (WP)

